



ANNUAL IMPACT REPORT 2025

For the period ending June 30, 2025

**Community Shares has raised more than
\$13.5 Million, helping over 160 charities since 1993.**

Generous Donors Made This Year Of Impact Possible

Donors across Ohio supported Community Shares' 68 member nonprofits.

2,225

Donors

3,201

Pledges

\$450K

Distributed to Members

\$609K

Pledged Amount

\$190

Average Annual Gift

Our Collective Impact

143 participants

from our member nonprofits benefitted from our 10 Professional Developments, Resource Connections, and Roundtables sessions



The first session was fantastic, and I am grateful for you all holding space. I look forward to this growing and using this community to better myself as a professional.



Impact in Numbers

68

Member Nonprofits

**including
3 New Members**

3,155

Charity Staff

70,368

Volunteers

2M +

Individuals Served

24,158

Animals Served

OUR MISSION

Community Shares of Mid Ohio builds mutually beneficial relationships and secures resources to empower member nonprofits in Central Ohio.

OUR VISION

Nonprofits collaboratively creating a more just, caring and healthy community for all.

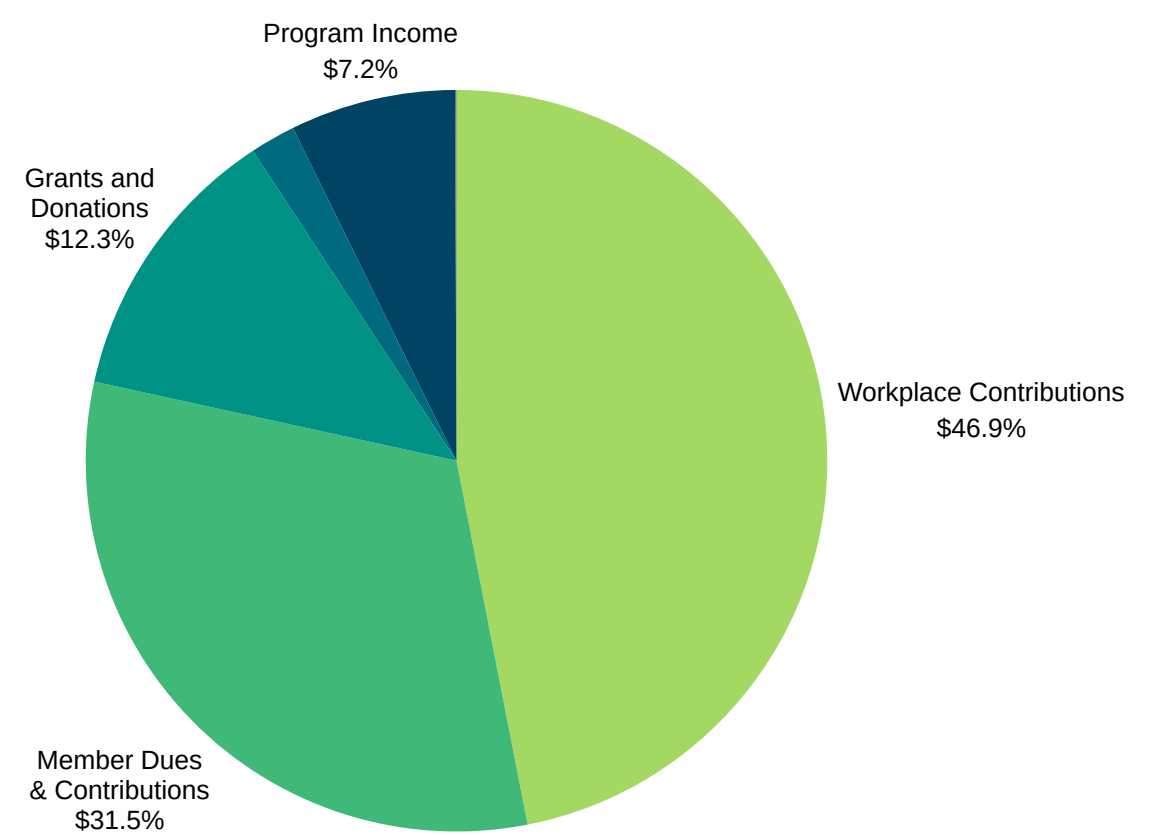
OUR VALUES

- Accountability to All
- Donor First
- Stronger Together
- Working for the Future



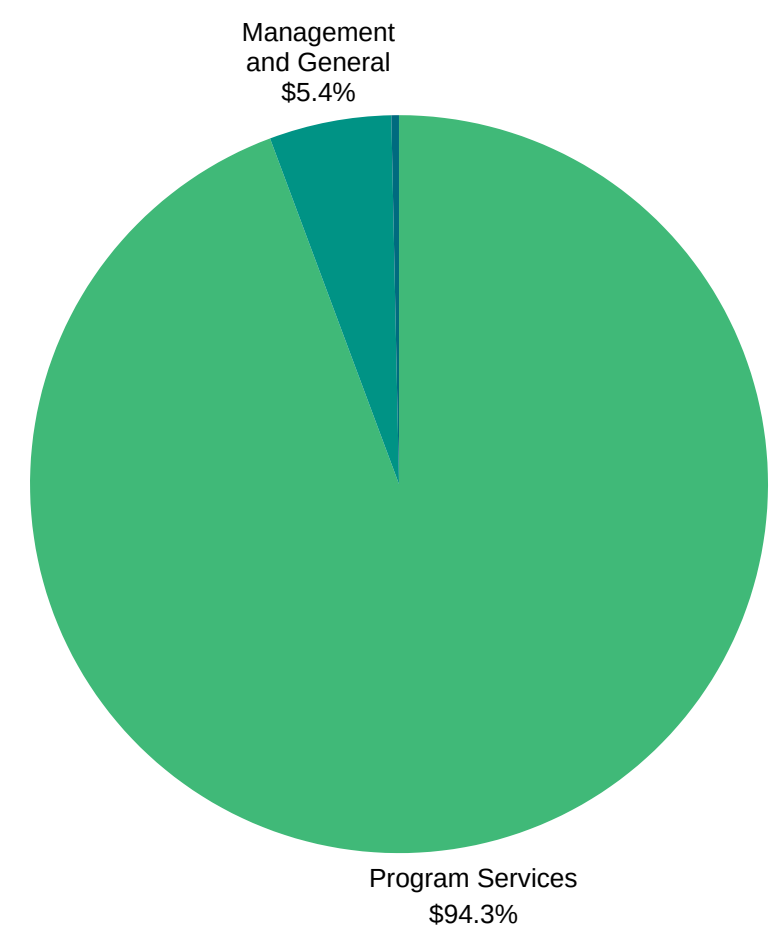
Operating Revenue & Support

Workplace Contributions	\$473,052
Member Dues & Contributions	\$302,775
Grants and Donations	\$118,470
Annual Fees & Dues	\$19,095
Program Income	\$69,319
Employee Retention Credit	\$557
Total Revenue	\$596,055



Operating Expenses

Program Services	\$542,851
Management and General	\$30,797
Fundraising	\$1,914
Total Expense	\$575,562



Total Assests as of June 30, 2025 - 45,381

Staff

Ryan Kovalaske
Executive Director

Kayla Campbell
Director of Member Services

Board of Trustees

Melissa Wolf Starr Chairperson Jewish Family Services	Community At Large Members	Zachary Martin BMW Financial Services
Deana Gordon Secretary Retired, Combined Charitable Campaigns	Dave Parker Rootstrike Labs	Stephanie Cory Page Social Impact
Rachyl Kershaw Treasurer Greater Columbus Consulting	Jeanne Hoffman CHADD	Andrea Devier LifeCare Alliance Immediate Past Chairperson
	Muizz Ahmed American Electric Power	
	Lisa Miller LaineGabriel	

Animal Rights & Welfare



Animal Protection Network
Cat Welfare Association
Columbus Humane
Humane Society of Delaware County
Humane Society of Madison County
RESCUEDohio
Stop the Suffering

Youth & Children Focused Services



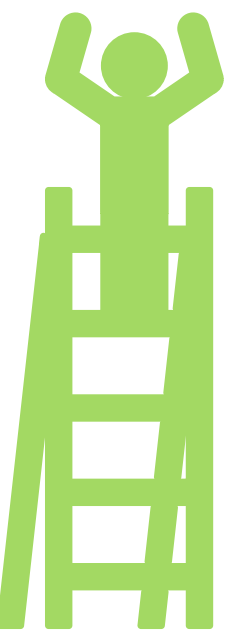
Camp Wyandot, Inc.
Childhood League
Dave Thomas Foundation for Adoption
Friends of CASA of Franklin County, Ohio
Future Possibilities
Girl Scouts of Ohio's Heartland
Kaleidoscope Youth Center, Inc.
Patches of Light



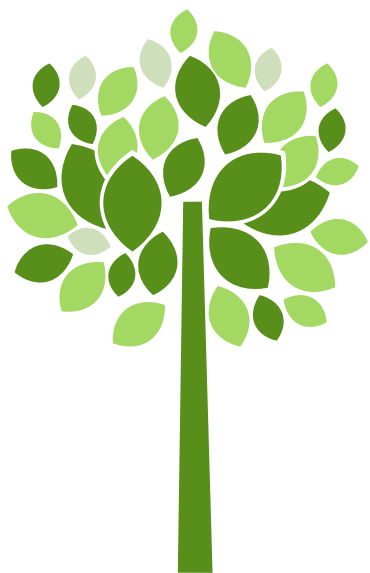
Violence Prevention & Safety

Ohio Domestic Violence Network
Get Behind The Badge
Deaf World Against Violence Everywhere

Promoting Individual Potential



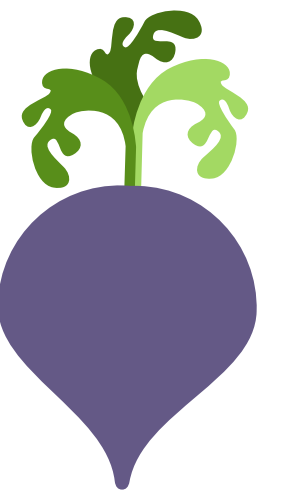
American Council of the Blind of Ohio
Creative Living, Inc.
Deaf Services Center
Dreams on Horseback
First Responders' Bridge
Voicecorps Reading Service
OpenDoor



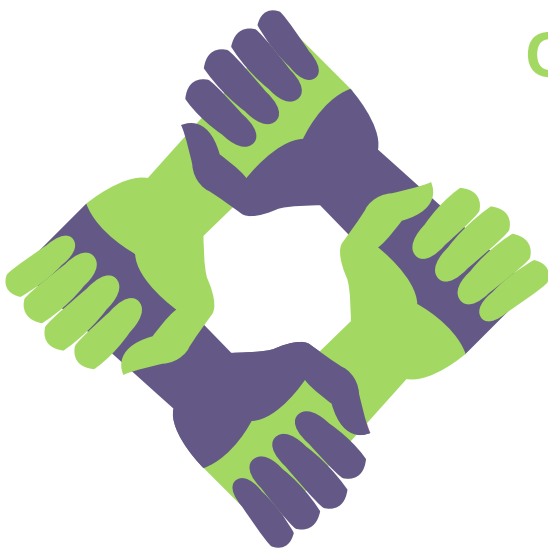
Preservation & Environmental Protection

Simply Living
Ohio Environmental Council
Ohio Ecological Food and Farm Assoc.
Four Seasons City Farm
Central Ohio Green Education Fund
*Friends of Goodale Park

Fighting Hunger & Malnutrition



NNEMAP, Inc.
Lifeline Christian Mission
Neighborhood Services, Inc.
Healthy Worthington Resource Center and
Food Pantry, Inc.
Heart of the City Foundation
Children's Hunger Alliance
Community Kitchen, Inc.
*Make-A-Day



Civil Action & Social Justice

Advocates for Basic Legal Equality
Community Refugee and Immigration Services Inc.
Equality Ohio Education Fund
Ohio Crime Victims Justice Center
Abortion Forward
Ohio Access to Justice Foundation
Ohio Crime Victim Justice Center
Stonewall Columbus, Inc.

Ensuring Affordable / Accessible Housing



Help for Homelessness and Beyond
Habitat for Humanity-MidOhio
Furniture Bank of Central Ohio
Columbus Coalition for the Homeless
Coalition on Homelessness and
Housing in Ohio (COHHIO)
ModCon Living
Make-A-Day

Fostering Education & the Arts

The Columbus Historical Society
Franklin County Historical Society/COSI
King Arts Complex
Ohio Alliance for Arts Education



Healthy Lifestyle Choices

The Breathing Association
Columbus Outdoor Pursuits
Equitas Health Inc.
Healthy LifeStars
LifeCare Alliance
Local Matters
Planned Parenthood of Greater Ohio
Yay Bikes!



Civic Involvement and United Communities

*BESA Community



New members for the year have an asterisk * next to their name

Contact Us

(614) 262-1176
info@communityshares.net

1699 W Mound St.
Columbus, OH 43223

www.communityshares.net
facebook.com/comsharecbus